



Level in seconds

Tilts $\pm 15^\circ$ | Rotates 360°



Fits any tripod

3/8" hole | 1/4" adaptor



Fits any tripod head

1/4" thread | 3/8" adaptor



Secure head fit

using locking screws



LEVELLING ADAPTOR

Level **any** tripod or monopod in seconds,
or follow the action with ease

SPECIFICATIONS

Top Plate



Levelling Adaptor 42

- Base Plate: 42mm
- Top Plate: 45mm
- Height: 36mm
- Weight: 115g

Ideal for
**TRAVEL
TRIPODS**



Levelling Adaptor 45

- Base Plate: 45mm
- Top Plate: 50mm
- Height: 39mm
- Weight: 140g



Ideal for
**FULL
SIZED
TRIPODS**



Levelling Adaptor 55

- Base Plate: 55mm
- Top Plate: 60mm
- Height: 40mm
- Weight: 185g



Levelling Adaptor 65

- Base Plate: 65mm
- Top Plate: 70mm
- Height: 40mm
- Weight: 250g



Levelling Adaptor 75

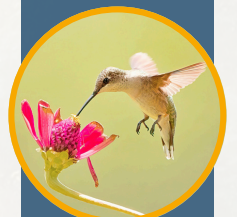
- Base Plate: 75mm
- Top Plate: 80mm
- Height: 43mm
- Weight: 350g

Base Plate

IDEAL FOR



Sports
Photographers



Wildlife
Photographers



Landscape
Photographers



Content
Creators



TIP

Why not attach your kit direct to minimise weight, without compromising control?